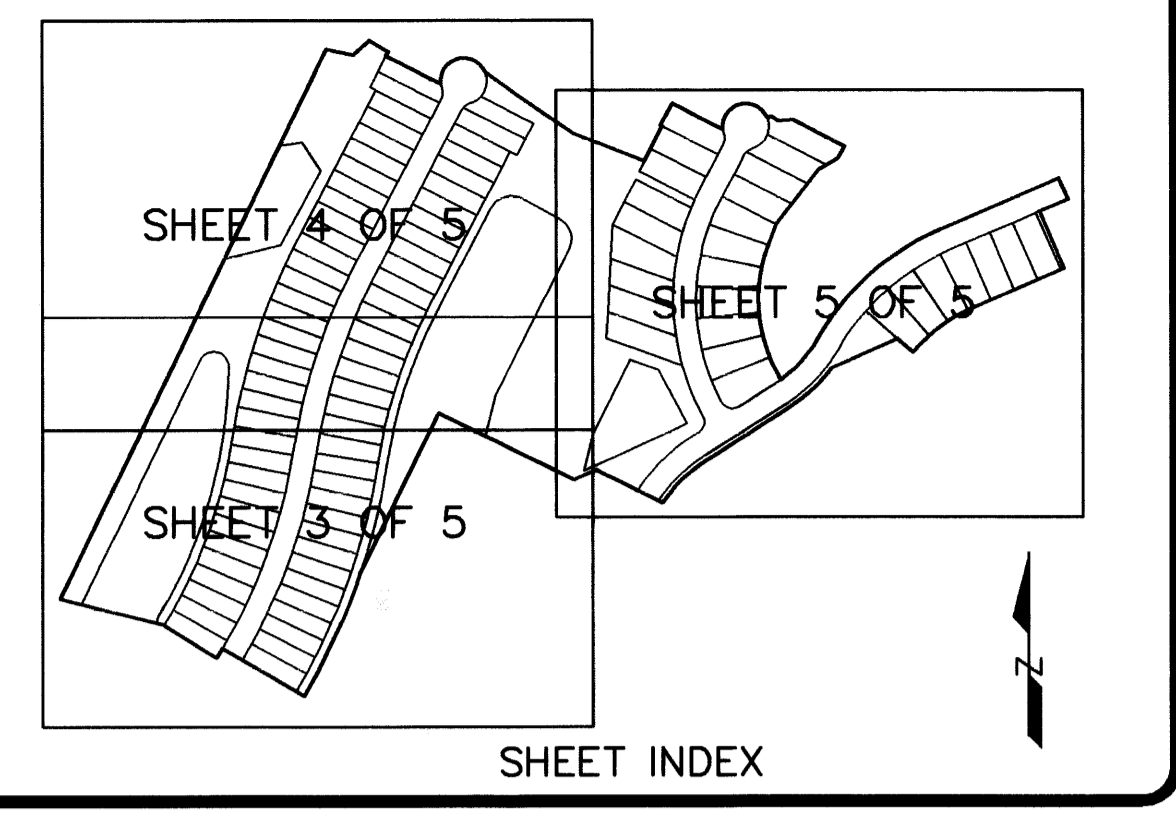


CLERK'S RECORDING CERTIFICATE

I, MARSHA STILLER, CLERK OF THE CIRCUIT COURT OF MARTIN COUNTY, FLORIDA, HEREBY CERTIFY THAT THIS PLAT WAS FILED FOR RECORD IN PLAT BOOK 4, PAGE 42, MARTIN COUNTY, FLORIDA, PUBLIC RECORDS THIS 20th DAY OF January, 1998 MARSHA STILLER, CLERK OF THE CIRCUIT COURT MARTIN COUNTY, FLORIDA. FILE NUMBER 1274847 BY Charlotte Burkey DEPUTY CLERK 1-39-41-001-000-0000-0 SUBDIVISION PARCEL CONTROL NO.



DOUBLE TREE PLAT NO. 7, A P.U.D.(r) "A PLAT OF PHASE IIIB" BEING A PORTION OF LAND LYING IN SECTIONS 1 AND 2, TOWNSHIP 39 SOUTH, RANGE 41 EAST MARTIN COUNTY, FLORIDA

TITLE CERTIFICATION

I, TERENCE P. MCCARTHY, A MEMBER OF THE FLORIDA BAR, HEREBY CERTIFY THAT AS OF Oct. 9th, 1997, AT 8:00 AM 1. RECORD TITLE TO THE LAND DESCRIBED AND SHOWN ON THIS PLAT IS IN THE NAME OF THE CORPORATION EXECUTING THE CERTIFICATE OF OWNERSHIP AND DEDICATION HEREON. 2. ALL MORTGAGES NOT SATISFIED OR RELEASED OF RECORD ENCUMBERING THE LAND DESCRIBED HEREON AS FOLLOWS: A) MORTGAGE FROM DOUBLE TREE, INC., A FLORIDA CORPORATION, TO FIRST FEDERAL SAVINGS AND LOAN ASSOCIATION OF THE PALM BEACHES, NOW KNOWN AS FIRST BANK OF FLORIDA, DATED APRIL 26, 1993, RECORDED IN OFFICIAL RECORDS BOOK 1008, PAGE 2261, AS MODIFIED BY INSTRUMENT DATED JULY 26, 1993, RECORDED IN OFFICIAL RECORDS BOOK 1029, PAGE 745, AS MODIFIED BY INSTRUMENT DATED DECEMBER 30, 1993, RECORDED IN OFFICIAL RECORDS BOOK 1049, PAGE 2276, AS MODIFIED BY INSTRUMENT DATED DECEMBER 2, 1994, RECORDED IN OFFICIAL RECORDS BOOK 1100, PAGE 367, AS MODIFIED BY INSTRUMENT DATED AS OF DECEMBER 28, 1995, AND RECORDED IN OFFICIAL RECORDS BOOK 1155, PAGE 2425, ALL IN THE PUBLIC RECORDS OF MARTIN COUNTY, FLORIDA. B) PURCHASE MONEY MORTGAGE DATED DECEMBER 28, 1995, FROM DOUBLE TREE, INC. TO SEAWIND LAND CORPORATION, AS RECORDED IN OFFICIAL RECORDS BOOK 1155, PAGE 2437, OF THE PUBLIC RECORDS OF MARTIN COUNTY, FLORIDA. 3. ALL TAXES THAT ARE DUE AND PAYABLE PURSUANT TO SECTION 197.192, F.S., HAVE BEEN PAID. DATED THIS 31st DAY OF October, 1997.

TERENCE P. MCCARTHY MCCRATHY, SUMMERS, BOBKO, MCKEY, WOOD & SAWYER, P.A. FLORIDA BAR NO. 168845 2081 E. OCEAN BOULEVARD, 2ND FLOOR STUART, FLORIDA 34996

MORTGAGEE'S CONSENT TO PLAT

SEAWIND LAND CORPORATION, FORMERLY KNOWN AS T.P. & J. CORPORATION, HEREBY CERTIFY THAT THEY ARE THE HOLDERS OF THAT CERTAIN MORTGAGE DATED DECEMBER 28, 1995, AS RECORDED IN OFFICIAL RECORDS BOOK 1155, PAGE 2437, OF THE PUBLIC RECORDS OF MARTIN COUNTY, FLORIDA, ON THE LAND DESCRIBED HEREON AND DO HEREBY CONSENT TO THE DEDICATIONS HEREON AND DO SUBORDINATE THEIR MORTGAGES, TO SUCH DEDICATION.

SEAWIND LAND CORPORATION, FORMERLY KNOWN AS T.P. & J. CORPORATION IN WITNESS WHEREOF, THE SAID MORTGAGE HOLDER HAS CAUSED THESE PRESENTS TO BE SIGNED BY ITS VICE PRESIDENT AND ATTESTED TO BY ITS ASSISTANT SECRETARY AND ITS SEAL TO BE AFFIXED HERETO BY AND WITH THE AUTHORITY OF ITS BOARD OF DIRECTORS THIS 22nd DAY OF October, A.D., 1997. BY: Paul E. Sklarby VICE PRESIDENT ATTEST: Dorothy M. Morris ASSIST. SECRETARY WITNESSES: Michelle D. Oden

ACKNOWLEDGEMENT

STATE OF Florida Virginia COUNTY OF Palm Beach FAIRFAX BEFORE ME, THE UNDERSIGNED NOTARY PUBLIC, PERSONALLY APPEARED Paul E. Sklarby and Dorothy Morris TO ME WELL KNOWN TO BE THE PRESIDENT AND SECRETARY, RESPECTIVELY, OF SEAWIND LAND CORPORATION, FORMERLY KNOWN AS T.P. & J. CORPORATION, A FLORIDA CORPORATION AND THAT THE SEAL AFFIXED IS THE CORPORATE SEAL OF SAID CORPORATION AND THAT IT WAS AFFIXED BY DUE AND REGULAR CORPORATE AUTHORITY, AND THAT IT IS THE FREE ACT AND DEED OF SAID CORPORATION. THEY ARE: PERSONALLY KNOWN TO ME OR () HAVE PRODUCED AS IDENTIFICATION. NOTARY PUBLIC, STATE OF Virginia AT LARGE STATE OF Virginia AT LARGE COMMISSION NO. MY COMMISSION EXPIRES: June 30, 2001

MORTGAGEE'S CONSENT TO PLAT

FIRST BANK OF FLORIDA, FORMERLY KNOWN AS FIRST FEDERAL SAVINGS AND LOAN ASSOCIATION OF THE PALM BEACHES, HEREBY CERTIFY THAT THEY ARE THE HOLDERS OF THAT CERTAIN MORTGAGE DATED APRIL 26, 1993, RECORDED IN OFFICIAL RECORDS BOOK 1008, PAGE 2261, AS MODIFIED BY INSTRUMENT DATED JULY 26, 1993, RECORDED IN OFFICIAL RECORDS BOOK 1029, PAGE 745, AS MODIFIED BY INSTRUMENT DATED DECEMBER 30, 1993, RECORDED IN OFFICIAL RECORDS BOOK 1049, PAGE 2276, AS MODIFIED BY INSTRUMENT DATED DECEMBER 2, 1994, RECORDED IN OFFICIAL RECORDS BOOK 1100, PAGE 367, AS MODIFIED BY INSTRUMENT DATED AS OF DECEMBER 28, 1995, AND RECORDED IN OFFICIAL RECORDS BOOK 1155, PAGE 2425, ALL IN THE PUBLIC RECORDS OF MARTIN COUNTY, FLORIDA, ON THE LAND DESCRIBED HEREON AND DO HEREBY CONSENT TO THE DEDICATIONS HEREON AND DO SUBORDINATE THEIR MORTGAGES TO SUCH DEDICATION.

FIRST BANK OF FLORIDA, FORMERLY KNOWN AS FIRST FEDERAL SAVINGS AND LOAN ASSOCIATION OF THE PALM BEACHES IN WITNESS WHEREOF, THE SAID MORTGAGE HOLDER HAS CAUSED THESE PRESENTS TO BE SIGNED BY ITS VICE PRESIDENT AND ATTESTED TO BY ITS ASST. SECRETARY AND ITS SEAL TO BE AFFIXED HERETO BY AND WITH THE AUTHORITY OF ITS BOARD OF DIRECTORS THIS 31st DAY OF October, 1997. BY: Susan H. Dahlgren VICE PRESIDENT ATTEST: Elizabeth Cook ASSIST. SECRETARY WITNESSES: Diane Davis

ACKNOWLEDGEMENT

STATE OF FLORIDA COUNTY OF PALM BEACH BEFORE ME, THE UNDERSIGNED NOTARY PUBLIC, PERSONALLY APPEARED Frank Savageman and Elizabeth Cook TO ME WELL KNOWN TO BE THE VICE PRES. PRESIDENT AND SECRETARY, RESPECTIVELY, OF FIRST BANK OF FLORIDA, FORMERLY KNOWN AS FIRST FEDERAL SAVINGS AND LOAN ASSOCIATION OF THE PALM BEACHES, A FLORIDA CORPORATION, AND THAT THE SEAL AFFIXED IS THE CORPORATE SEAL OF SAID CORPORATION AND THAT IT WAS AFFIXED BY DUE AND REGULAR CORPORATE AUTHORITY, AND THAT IT IS THE FREE ACT AND DEED OF SAID CORPORATION. THEY ARE: PERSONALLY KNOWN TO ME OR () HAVE PRODUCED AS IDENTIFICATION. NOTARY PUBLIC, STATE OF FLORIDA AT LARGE STATE OF FLORIDA AT LARGE COMMISSION NO. CC 629165 MY COMMISSION EXPIRES: 3-11-2001

CERTIFICATE OF SURVEYOR AND MAPPER

I, ALBERT C. ALLEN III, HEREBY CERTIFY THAT THIS PLAT OF "DOUBLE TREE, PLAT NO. 7, A P.U.D.", IS A TRUE AND CORRECT REPRESENTATION OF THE LANDS SURVEYED, THAT SUCH SURVEY WAS MADE UNDER MY RESPONSIBLE DIRECTION AND SUPERVISION; THAT SUCH SURVEY IS ACCURATE TO THE BEST OF MY KNOWLEDGE AND BELIEF; THAT PERMANENT REFERENCE MONUMENTS HAVE BEEN PLACED, AS REQUIRED BY LAW; THAT PERMANENT CONTROL POINTS WILL BE SET FOR THE REQUIRED IMPROVEMENTS WITHIN THE PLATTED LANDS; AND, FURTHER, THAT THE SURVEY DATA COMPLIES WITH ALL OF THE REQUIREMENTS OF CHAPTER 177, FLORIDA STATUTES, AND APPLICABLE ORDINANCES OF MARTIN COUNTY, FLORIDA.

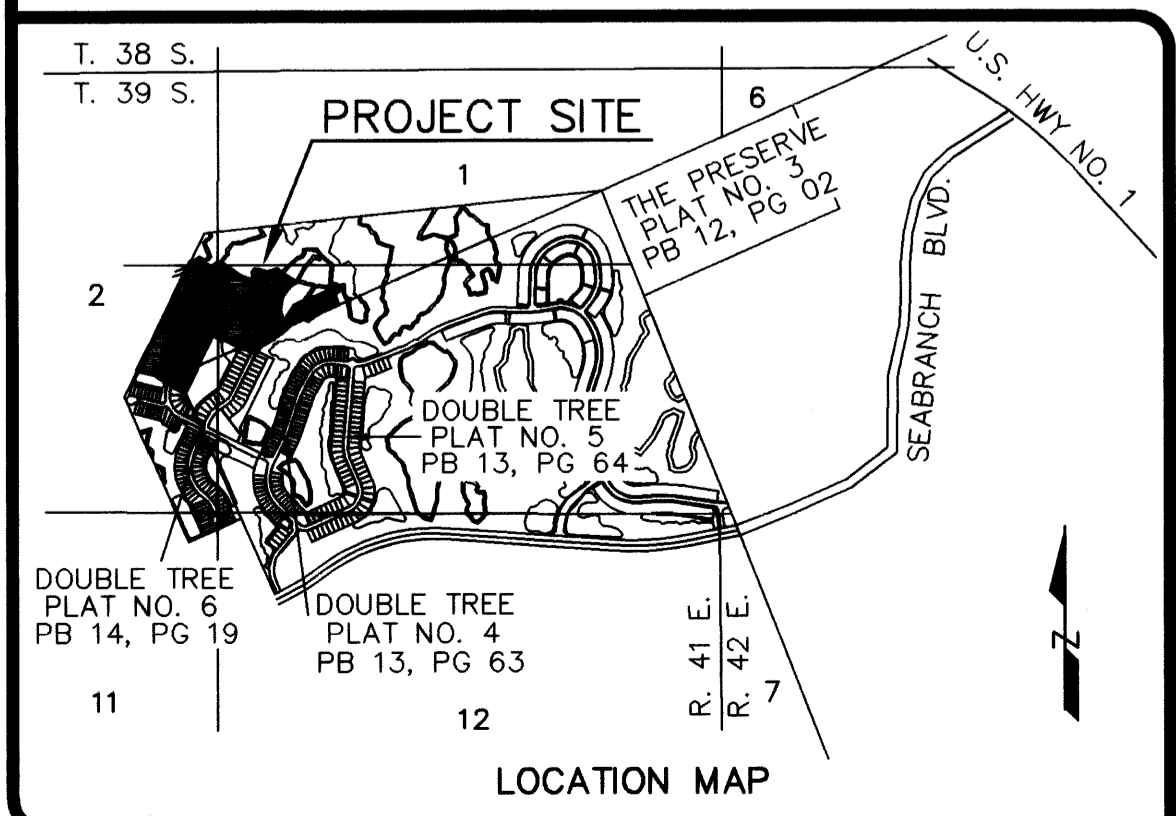
ALBERT C. ALLEN III FLORIDA SURVEYOR AND MAPPER REGISTRATION NO. 4130

LEGEND

- o = SET PERMANENT CONTROL POINT (PCP) PARKER KALON NAIL & WASHER LABELED "GCY LB 4108"
[] = FOUND PERMANENT REFERENCE MONUMENT (PRM) 4"x4" CONCRETE MONUMENT WITH DISK LABELED "GCY INC. P.R.M. LB 4108, PSM 4130"
■ = SET PERMANENT REFERENCE MONUMENT (PRM) 4"x4" CONCRETE MONUMENT WITH DISK LABELED "GCY INC. P.R.M. LB 4108, PSM 4130"
+ = SECTION CORNER
x = QUARTER CORNER
Δ = DELTA (CENTRAL ANGLE)
L = ARC LENGTH
R = RADIUS
CB = CHORD BEARING
D.E. = DRAINAGE EASEMENT
LB = LICENSED BUSINESS
M.E. = MAINTENANCE EASEMENT
P.C. = POINT OF CURVATURE
P.R.C. = POINT OF REVERSE CURVATURE
PSM = PROFESSIONAL SURVEYOR AND MAPPER
P.T. = POINT OF TANGENCY
P.U.D. = PLANNED UNIT DEVELOPMENT
RAD. = RADIAL LINE
U.E. = UTILITY EASEMENT

SURVEYOR'S NOTES

- 1) THIS PLAT, AS RECORDED IN ITS ORIGINAL FORM IN THE PUBLIC RECORDS, IS THE OFFICIAL DEPICTION OF THE SUBDIVIDED LANDS DESCRIBED HEREON AND WILL IN NO CIRCUMSTANCES BE SUPPLANTED IN AUTHORITY BY ANY OTHER FORM OF THE PLAT, WHETHER GRAPHIC OR DIGITAL.
2) THERE MAY BE ADDITIONAL RESTRICTIONS THAT ARE NOT RECORDED ON THIS PLAT THAT MAY BE FOUND IN THE PUBLIC RECORDS OF THIS COUNTY.
3) THERE SHALL BE NO BUILDING OR ANY OTHER KIND OF CONSTRUCTION, OR PLACEMENT OF TREES OR SHRUBS ON DRAINAGE EASEMENTS.
4) BEARINGS SHOWN HEREON ARE REFERENCED TO THE NORTH LINE OF "DOUBLE TREE PLAT NO. 6, A P.U.D.", AS RECORDED IN PLAT BOOK 14, PAGE 19, PUBLIC RECORDS, MARTIN COUNTY, FLORIDA. SAID LINE BEARS SOUTH 63°47'54" EAST.



Professional seals for SURVEYOR, NOTARY PUBLIC, DOUBLE TREE, INC., SEAWIND LAND CORPORATION, and FIRST BANK OF FLORIDA.

GCY INCORPORATED PROFESSIONAL SURVEYORS AND MAPPERS 1505 S.W. MARTIN HIGHWAY P.O. BOX 1469 PALM CITY, FLORIDA 34991 (561-286-8083) CERTIFICATE OF AUTHORIZATION LB 4108